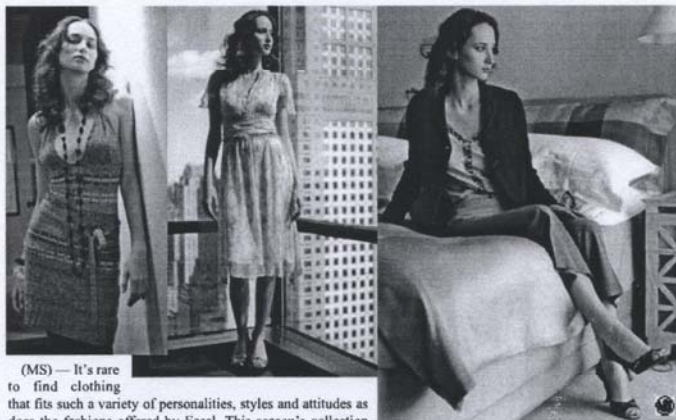


FASHION

ATTENTION EDITORS: Download these and other exclusive Metro fashion features and four-color images from Metro's online editorial library.

Fashion for Every Woman



(MS) — It's rare to find clothing that fits such a variety of personalities, styles and attitudes as does the fashions offered by Easel. This season's collection runs the gamut of sexy, demure and sophisticated — looks that are so desired by today's fashion-conscious women. Shown above from the Fall/Winter 2005 collection (left to right): Fairisle X-Back strap dress is great alone or paired with a pair of jeans. Gracie Cap sleeve dress with deep V-Keyhole and removable slip is a versatile look — ideal for the office or a special daytime occasion. This Short Sleeve V-neck Tee with stones paired with Low-Rise, 4-placket cropped Pant and Lined Notch Collar Baby jacket is work smart and will make you look chic at your next business meeting or just around town. For more information, visit www.easelonline.com. Photos by Douglas diMonda.

TF05B970

Beauty Flows Freely



Up-and-Coming Designer



(MS) — Esther Nash is making a name for herself in the fickle world of fashion. With a background heavy in art study, and with scholarships from such institutions like the Metropolitan Museum of Art, Brooklyn Museum, and the National Academy of Design, Nash is now completing her studies at the prestigious Fashion Institute of Technology in New York City, where she is ready to fully immerse herself into fashion design.

Nash prides herself in being a "hands-on" kind of designer. She creates one-of-a-kind originals that she hand sews, drapes and silkscreens herself. Her designs are described as casual chic and rock star attire — ideal for those looking to stand out from the masses and get noticed.

Nash has designed for both celebrity and private clientele, including Robert Verdi from *Fashion Police* and *Surprise by Design* fame. Her "Baby Doll" line for women and "Sugar Daddy" line for men have gotten exposure through a number of outlets. This up-and-coming designer has had her "Baby Doll" collection featured on HBO's former hit show, *Sex and the City*, her fashion show attended by Fashion editor, Anna Wintour, and has been interviewed by Joan Rivers for red carpet arrivals for "Guide to the Golden Globes."

For more information on Nash's collections, visit www.eshernash.com. Photo at left courtesy of Esther Nash.

TF05B969



(MS) — Edgy with an air of sensuality describes the fashions by acclaimed designers Hamii Yoon and Gene Kang — the husband-and-wife team behind the label Y & Kei. The team designs according to the Buddhist principle, "water the earth," where they hope to nourish the world with happiness and beauty through their designs. The looks lean toward European design principles with an added Asian influence, and are in vogue with stylish celebrities like Alicia Keyes, Halle Berry and Pink. For more information, visit www.yandkei.com. Photos from the fall/winter 2005 collection courtesy of Froylan Flowers.

TF05B971