

in motion Talent

BOYS of SUMMER:
the Hottest Male Models
from Top New York Agencies

SYLVIA TOSUN:
Music's New Shooting star
Weaves an Harmonic Thread

New York Goes Film Festival Crazy

BOSCOVE B.
The Poet of a Two-Dimensional World

Volume VI, Issue 2 \$2.95





Sparkle And Shine

Like The Superstar You Are on a shoestring budget

Fashion designer Esther Nash will help you create the look you want at affordable prices that will match any budget.

By Esther Nash

Here's a secret on how to create a fired-up rock star look with just a pair of scissors, paint and safety pins. In no time, you will be on your way to that Esther Nash original design that is easy to afford. Now go to your closet and find an outdated skirt that you would have thrown out anyway and we can get started ...

What you will need to design your own rockin' skirt:

1. Pinking Shear Scissors
2. Safety Pins
3. Oil based Paint - no water colors
(it will run in the wash and will not shine as much)
4. Old Skirt

STEP 1 Put skirt on a flat table or on a clean flat surface.

STEP 2 Take pinking shears and cut the waistline to the desired length straight across the skirt. Repeat at bottom of skirt. Adjust to your size accordingly.

STEP 3 Take safety pin and put around the pockets and/or at the hemline or at various areas on the skirt to create the design you like.

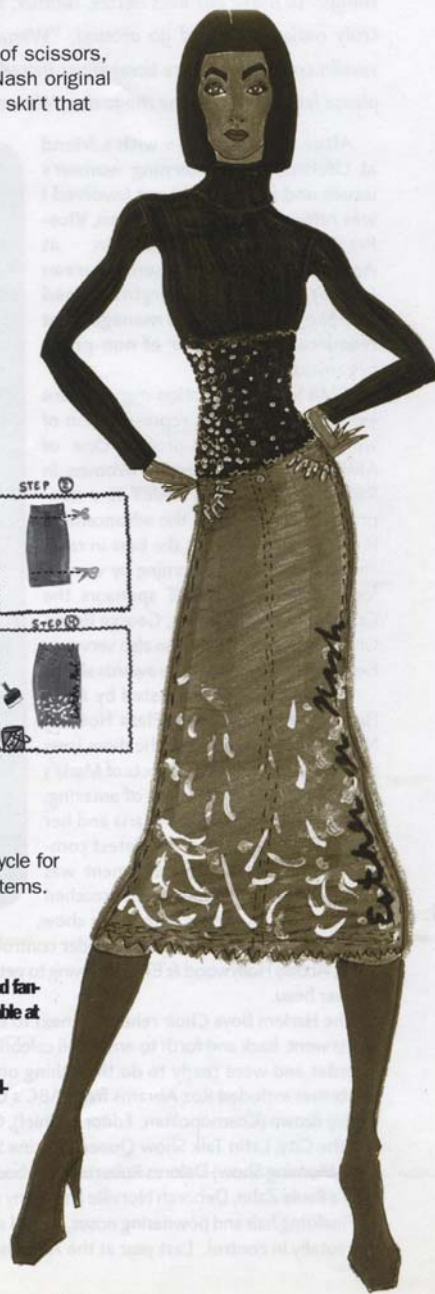
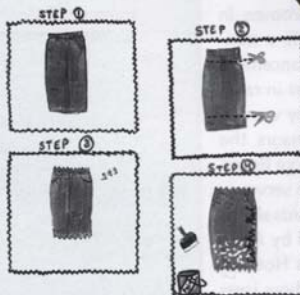
STEP 4 Take your oil based paint and design your skirt. Use different colors to enhance your look .

Wearing gloves will prevent re-designing yourself. Let the skirt air-dry. Wash once in regular cool water cycle for colored clothes. Dry separately from other clothing items.

Essential Items Needed to Complete Your Look

To complete your outfit you will need to buy a sequin midriff and fantasy copper topper (beret) designed by Esther Nash and available at Baby Doll Boutiques and a classic turtleneck.

Call me at 877-OH-BABY-0 or visit my website at babydoll-sugardaddy.8k.com for more information.



NEXT ISSUE !!!

DESIGN YOUR OWN ROCK STAR JEANS